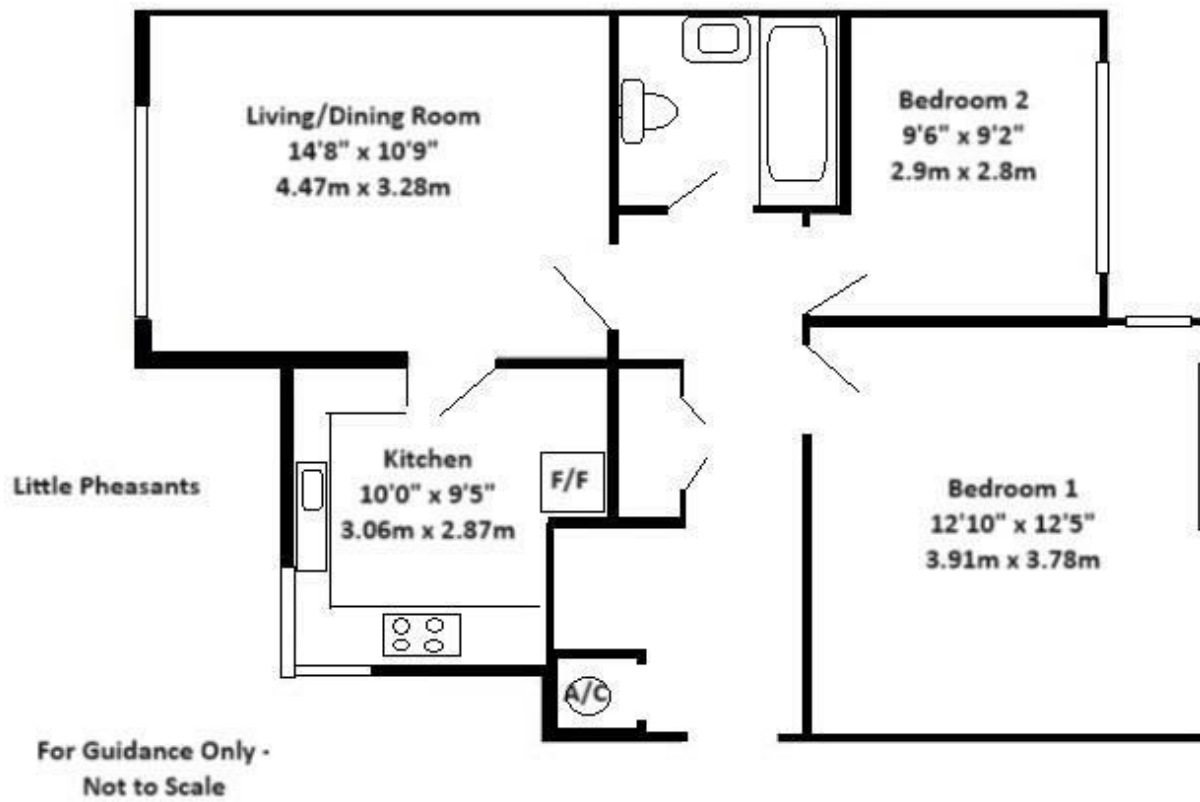


6 LITTLE PHEASANTS, CHARLTON KINGS, CHELTENHAM, GL53 8EJ

£1,050 PCM

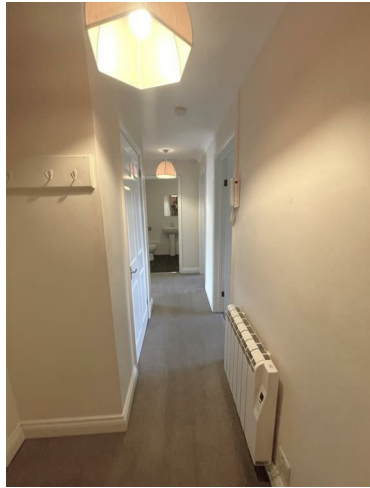
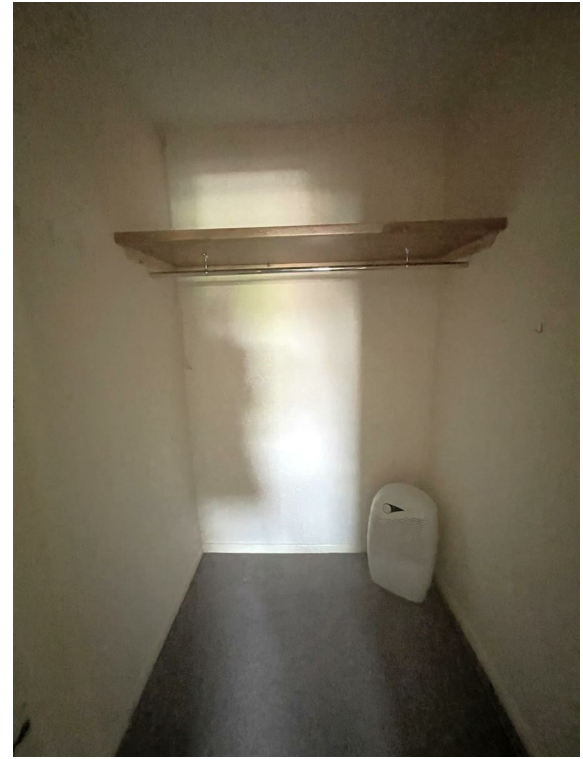
CHELTENHAM BOROUGH COUNCIL B

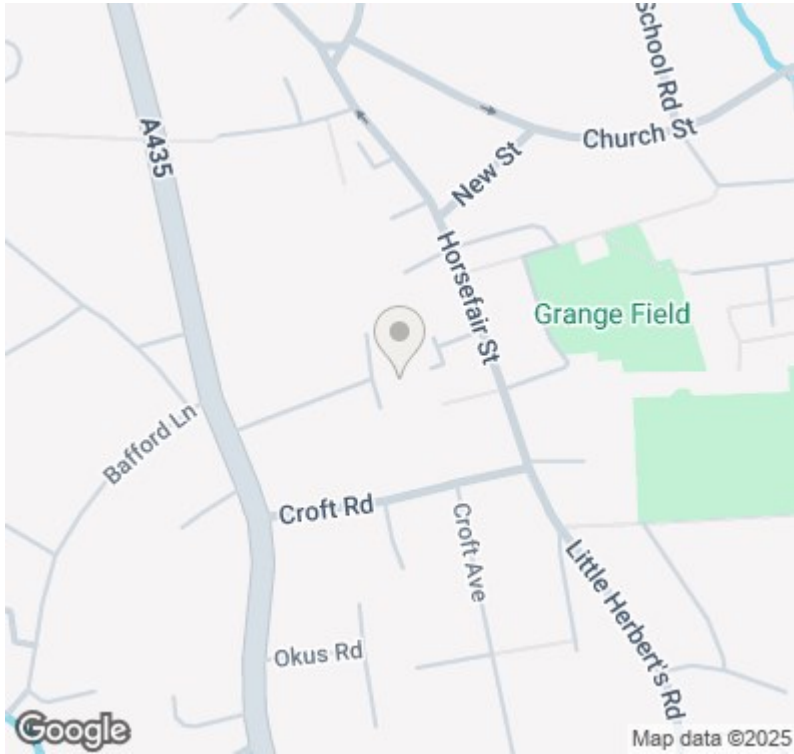




PCM £1,050 PCM

PLEASE EMAIL YOUR ENQUIRY IN THE FIRST INSTANCE - Excellent Two Bedroom Apartment in the heart of Charlton Kings. The property situated on the first floor of this purpose built block at the end of a quite cul-de-sac. The accommodation offers entrance to hall, large living room/dining room, good size kitchen with white goods, two double bedrooms and family bathroom with shower over bath. further benefits include double glazing, modern electric heating, ample internal and external storage and residents' parking. Very handy for the local shops - a Sainsbury's local and schools just around the corner.





Energy Efficiency Rating		
	Current	Potential
Very energy efficient - lower running costs		
(92 plus) A		
(81-91) B		
(69-80) C		78
(55-68) D	64	
(39-54) E		
(21-38) F		
(1-20) G		
Not energy efficient - higher running costs		
England & Wales	EU Directive 2002/91/EC	

Sure Property Group
 23 Bath Street, Cheltenham
 GL50 1YA
 01242 241200
info@surecheltenham.co.uk

Cheltenham Borough Council
 COUNCIL TAX BAND B